



MEDIUM POWER REPEATERS

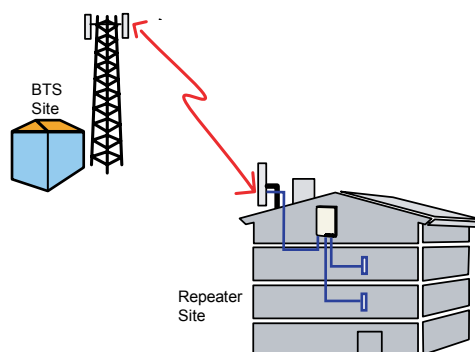
The channel selective medium power repeaters are used to provide cost-effective coverage for indoor as well as outdoor environments. The impressive low noise figure in these repeaters contributes to increasing the coverage footprint of the repeater. In the world of UMTS, good filter characteristics is a key issue, which is why Axell Wireless has designed a filter that meets the high demands of selectivity as well as delay.

Through this unique design of Axell Wireless medium power repeater, there are substantial cost-savings to be made. Both the capital and the operational expenditures are reduced by deploying Axell Wireless medium power repeater.

As a leading repeater manufacturer with a broad range of cell enhancing repeaters for various radio standards, Axell Wireless offers the highest levels of performance and quality, leading to a minimized Total Cost of Ownership. Our 20 years of experience in radio coverage engineering and design has contributed to building up a comprehensive know-how in the field of providing cost effective radio coverage solutions for large complex systems.

PRODUCT BENEFITS

- Relative competition, the Medium Power Repeater offers high output power
- Low noise figure
- Advanced and user-friendly remote control and supervision



CSR922W

Channel Selective WCDMA Repeater equipped with 2 channels

CSR924W

Channel Selective WCDMA Repeater equipped with 4 channels

SPECIFICATIONS

Operating Frequency Range

Uplink (UL)	880 - 915 MHz
Downlink (DL)	925 - 960 MHz
Operational Bandwidth	35 MHz
Number of channels	1 - 4
Gain	60 - 90 dB, adjustable, in 1 dB steps.
Out of band gain	Compliant to ETSI TS 25.106 chapter 8

Output power/carrier	2 Channels	4 Channels
UL/DL	+ 31±1 dBm (using 3GPP TS 25.106 TM 1 / 64)	+ 28±1 dBm (using 3GPP TS 25.106 TM 1 / 64)

Antenna connectors	DIN 7/16
Electrical ratings	110/230 V AC, 50/60 Hz (alt. - 48 V)
Power Consumption (2 Channels)	120 W typical (traffic dependent)
Power Consumption (4 Channels)	220 W typical (traffic dependent)

Mechanical

Dimensions (2 Channels)	540 x 350 x 150 mm
Dimensions (4 Channels)	540 x 350 x 220 mm
Weight (2 Channels)	22 kg
Weight (4 Channels)	33 kg
Enclosure	Aluminium (IP 65)



Environmental

EMC	See compliance below
Operating Temperature	- 25 to + 55 ° C
Storage	- 30 to + 70 ° C
Humidity	ETSI EN 300 019-2-4 (see compliance below)
MTBF	> 100000 hrs
Complies with	ETSI TS 25.106, ETSI TS 25.143 ETSI EN 301 498-23 EN 301 908-11 EN 60 950 EN 60215

All data is subject to change without prior notice

AXELL WIRELESS UK
Asheridge Road
Chesham, Bucks
HP5 2QD, UK
Tel: + 44 (0) 1494 777000
Fax: + 44 (0) 1494 777002

info@axellwireless.com
www.axellwireless.com

AXELL WIRELESS SWEDEN
Box 7139
174 07 Sundbyberg
Sweden
Tel: + 46 (0) 8 475 4700
Fax: + 46 (0) 8 475 4799